

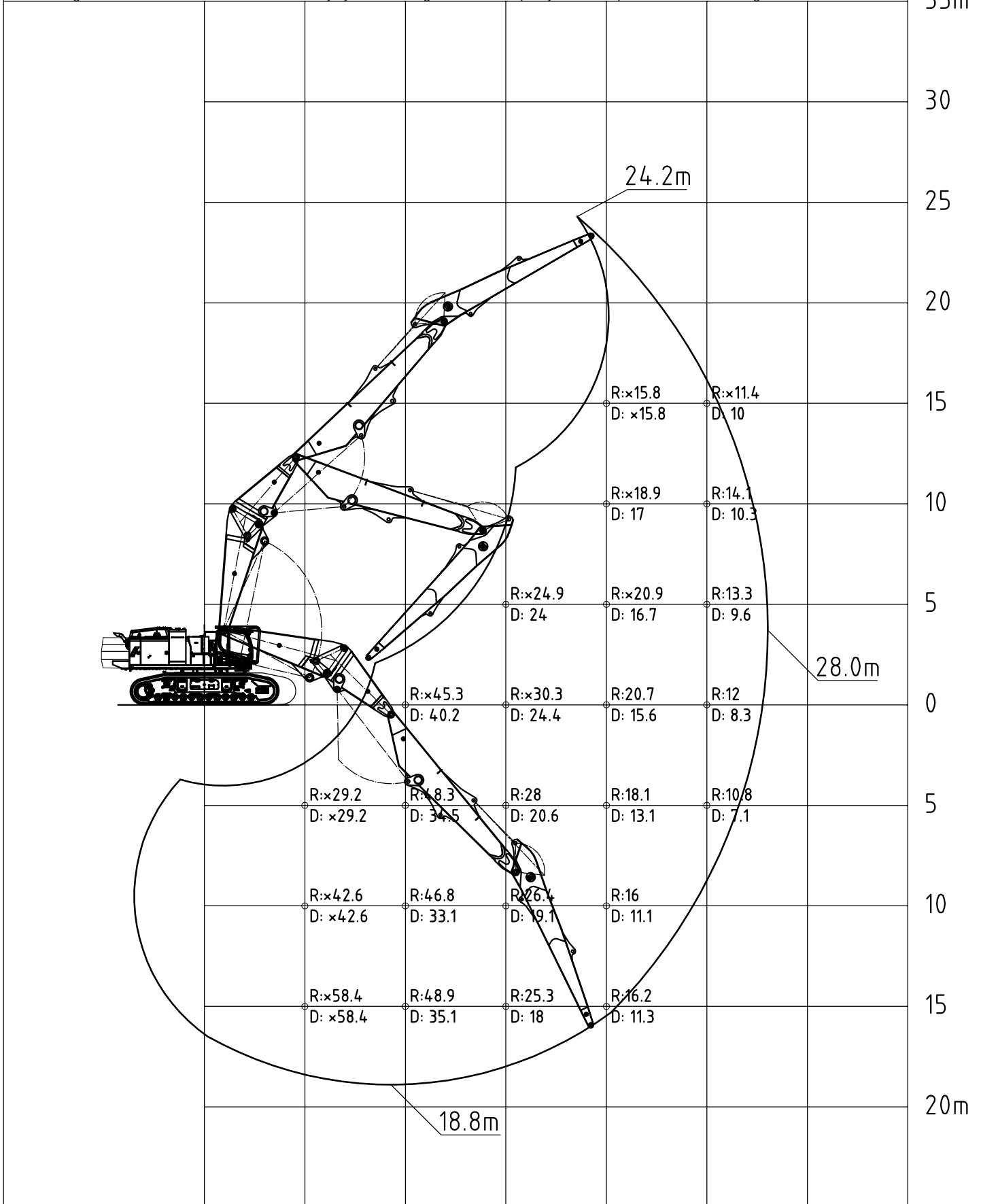


Lifting chart Liebherr R980 SME litronic

date 16-11-2020
concept graafgiel SW geknikt

Working pressure	: 350 bar (standard)
Counterweight	: std 35t + ext 25t extra
Shoe	: 600 mm
Linkage	: family
Boom length	: 10.0 m + 10.0 m lang
Stick length	: 8.5 m
Boom cylinder	: 260-180 3x
Arm cylinder	: 260-180 2x
Stick cylinder	: 200-140 2x - boven
Working tool	: excluded

Loads are in compliance with ISO 10567. They do not exceed 87% of hydraulic lifting capacity or 75% of tipping load.
R: along machine / D: Across machine / x: Limited by hydraulics. Weight in tonnes. Capacity at marked points. © B.V.Beco All rights reserved



0 5 10 15 20 25 30m